

## Test Report

No. NGBEC1906200901

Date: 10 Dec 2019

Page 1 of 5

JIN HUA DA RONG PAINT CO.,LTD

THE 6TH FACTORY WORKSHOP, NO.399 OF SHICHENG ROAD, QIUBIN INDUSTRIAL AREA, JINHUA CITY, ZHEJIANG PROVINCE.

The following sample(s) was/were submitted and identified on behalf of the clients as : Multicolour Soluble Fluorine Resin Coating

SGS Job No. : NP19-005155 - NB  
Date of Sample Received : 04 Dec 2019  
Testing Period : 04 Dec 2019 - 10 Dec 2019  
Test Requested : Selected test(s) as requested by client.  
Test Method : Please refer to next page(s).  
Test Results : Please refer to next page(s).

Signed for and on behalf of  
SGS-CSTC Standards Technical Services Co., Ltd. Ningbo Branch



Iris Xiao  
Approved Signatory



SGS-CSTC Standards Technical Services Co., Ltd.  
Ningbo Branch Chemical Laboratory

Unless otherwise agreed in writing, this document is issued by the Company subject to its General Conditions of Service printed overleaf, available on request or accessible at <http://www.sgs.com/en/Terms-and-Conditions.aspx> and, for electronic format documents, subject to Terms and Conditions for Electronic Documents at <http://www.sgs.com/en/Terms-and-Conditions/Terms-e-Documents.aspx>. Attention is drawn to the limitation of liability, indemnification and jurisdiction issues defined therein. Any holder of this document is advised that information contained hereon reflects the Company's findings at the time of its intervention only and within the limits of Client's instructions, if any. The Company's sole responsibility is to its Client and this document does not exonerate parties to a transaction from exercising all their rights and obligations under the transaction documents. This document cannot be reproduced except in full, without prior written approval of the Company. Any unauthorized alteration, forgery or falsification of the content or appearance of this document is unlawful and offenders may be prosecuted to the fullest extent of the law. Unless otherwise stated the results shown in this test report refer only to the sample(s) tested.

Attention: To check the authenticity of testing /inspection report & certificate, please contact us at telephone: (86-755) 8307 1443, or email: [CN.Doccheck@sgs.com](mailto:CN.Doccheck@sgs.com)

15/F West of Building 4, Lingyun Industry Park, No.1177 Lingyun Road, Ningbo National Hi-Tech Zone, Ningbo, Zhejiang, China 315040 t E&E (86-574)89070249

[www.sgs.com](http://www.sgs.com)

中国·浙江·宁波市国家高新区凌云路1177号凌云产业园4号楼西1-5层

邮编: 315040

t HL (86-574)89070271

t ML (86-574)89070242

e [sgs.china@sgs.com](mailto:sgs.china@sgs.com)

Test Results :

Test Part Description :

| Specimen No. | SGS Sample ID    | Description        |
|--------------|------------------|--------------------|
| SN1          | NGB19-062009.001 | Brown coating part |

Remarks :

- (1) 1 mg/kg = 0.0001%
- (2) MDL = Method Detection Limit
- (3) ND = Not Detected ( < MDL )
- (4) "-" = Not Regulated

**Polycyclic aromatic hydrocarbons (PAHs)**

Test Method : With reference to AfPS GS 2014:01 PAK, analysis was performed by GC-MS.

| <u>Test Item(s)</u>   | <u>Unit</u> | <u>MDL</u> | <u>001</u> |
|---|-------------|------------|------------|
| Acenaphthylene(ANY)   | mg/kg       | 0.1        | ND         |
| Acenaphthene(ANA)   | mg/kg       | 0.1        | ND         |
| Fluorene(FLU)   | mg/kg       | 0.1        | ND         |
| Phenanthrene(PHE)   | mg/kg       | 0.1        | ND         |
| Anthracene(ANT)   | mg/kg       | 0.1        | ND         |
| Fluoranthene(FLT)   | mg/kg       | 0.1        | ND         |
| Pyrene(PYR)   | mg/kg       | 0.1        | ND         |
| Benzo(a)pyrene(BaP)   | mg/kg       | 0.1        | ND         |
| Benzo(e)pyrene(BeP)   | mg/kg       | 0.1        | ND         |
| Benzo(a)anthracene(BaA)   | mg/kg       | 0.1        | ND         |
| Benzo(b)fluoranthene(BbF)   | mg/kg       | 0.1        | ND         |
| Benzo(j)fluoranthene(BjF)   | mg/kg       | 0.1        | ND         |
| Benzo(k)fluoranthene(BkF)   | mg/kg       | 0.1        | ND         |
| Chrysene(CHR)   | mg/kg       | 0.1        | ND         |
| Dibenzo(a,h)anthracene(DBA)   | mg/kg       | 0.1        | ND         |
| Benzo(g,h,i)perylene(BPE)   | mg/kg       | 0.1        | ND         |
| Indeno(1,2,3-c,d)pyrene(IPY)  | mg/kg       | 0.1        | ND         |
| Sum of Acenaphthylene, Acenaphthene, Fluorene, Phenanthrene, Pyrene, Anthracene, Fluoranthene | mg/kg       | -          | ND         |
| Naphthalene(NAP)  | mg/kg       | 0.1        | ND         |
| Sum of 18 PAHs  | mg/kg       | -          | ND         |



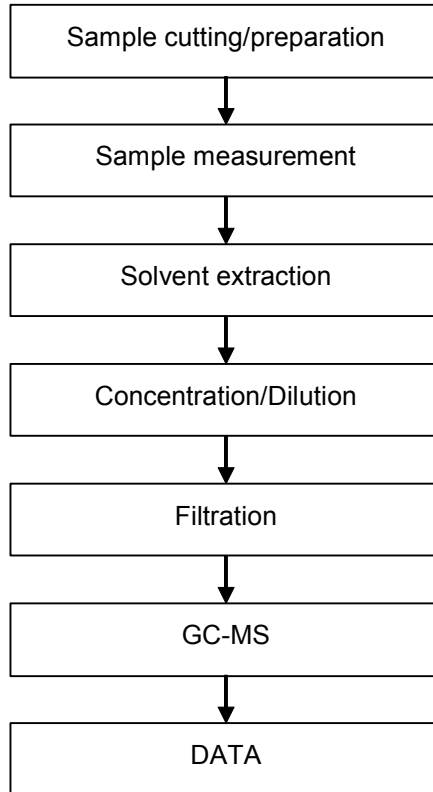
**AfPS ( German commission for Product Safety ) : GS PAHs requirements**

| Parameter   | Category 1<br>Material indented to be put in the mouth or toys with intended skin contact (longer than 30 s). | Category 2   |                             | Category 3   |                             |
|---|---|--|-----------------------------|--|-----------------------------|
|   |   | Toy under 2009/48/EC   | Other products under ProdSG | Toy under 2009/48/EC   | Other products under ProdSG |
|   |   | Materials not falling under category 1 with foreseeable contact to skin for longer than 30 s (long-term skin) or frequent contact. |                             | Materials not falling under category 1 or 2 with foreseeable contact to skin for less than 30 s (short-term skin contact). |                             |
| Benzo(a)pyrene mg/kg  | < 0.2   | < 0.2  | < 0.5                       | < 0.5  | < 1                         |
| Benzo(e)pyrene Mg/kg  | < 0.2   | < 0.2  | < 0.5                       | < 0.5  | < 1                         |
| Benzo(a)anthracene mg/kg  | < 0.2   | < 0.2  | < 0.5                       | < 0.5  | < 1                         |
| Benzo(b)fluoranthene mg/kg  | < 0.2   | < 0.2  | < 0.5                       | < 0.5  | < 1                         |
| Benzo(j)fluoranthene mg/kg  | < 0.2   | < 0.2  | < 0.5                       | < 0.5  | < 1                         |
| Benzo(k)fluoranthene mg/kg  | < 0.2   | < 0.2  | < 0.5                       | < 0.5  | < 1                         |
| Chrysene mg/kg  | < 0.2   | < 0.2  | < 0.5                       | < 0.5  | < 1                         |
| Dibenzo(a,h)anthracene mg/kg  | < 0.2   | < 0.2  | < 0.5                       | < 0.5  | < 1                         |
| Benzo(g,h,i)perylene mg/kg  | < 0.2   | < 0.2  | < 0.5                       | < 0.5  | < 1                         |
| Indeno(1,2,3-cd)pyrene mg/kg  | < 0.2   | < 0.2  | < 0.5                       | < 0.5  | < 1                         |
| Acenaphthylene, Acenaphthene, fluorene, phenanthrene, pyrene, anthracene, fluoranthene, mg/kg | < 1 Sum   | < 5 Sum  | < 10 Sum                    | < 20 Sum   | < 50 Sum                    |
| Naphthalene, mg/kg  | < 1   | < 2  |                             | < 10   |                             |
| Sum of 18 PAHs  | <1  | < 5  | < 10                        | < 20   | < 50                        |



## ATTACHMENTS

### PAHs Testing Flow Chart



Sample photo:



SGS authenticate the photo on original report only

\*\*\* End of Report \*\*\*

